

**PEEL
ALLIANCE**

FUTURE PEEL

**2020 STATE FUNDING REQUESTS TO SUPPORT
THE PRIORITIES OF THE PEEL REGION**



CONTENTS

8	About Peel Alliance	33	Peel Integrated Water Initiative
10	About the Peel Region	34	Australian Waterways Centre of Excellence <ul style="list-style-type: none">Phase 1, Component 1 – Data ArrayPhase 1, Component 2 – Waterways Research InfrastructurePhase 2 – Australian Waterways Centre of Excellence Innovation Hub
20	Peel Regional Trails Project & Coordination <ul style="list-style-type: none">Wungong Trail CentreDwellingup GapPeel Yalgorup Wetlands TrailsHotham Valley Rail TrailSea to Scarp TrailMundijong to Jarrahdale Rail Trail & Jarrahdale Oval Trail Head	40	Water Quality Infrastructure to Protect Peel-Harvey Estuary
27	Peel Regional Transport Plan	41	Lake Clifton/Yalgorup Masterplan and Rescuing of Lake Clifton Thrombolites
28	Tonkin Highway Grade Separations	42	Aboriginal (Noongar) Ranger Program
29	Mundijong Freight Rail Realignment	44	State National Resource Management Grants support
30	Agri-Innovation Precinct – Enterprise Support Program	45	DBCA Capital Works, Maintenance and Biosecurity
		46	Peel Health and Wellbeing Taskforce Initiatives
		48	Support for Provision of Community Services in Peel
		49	Peel Says No To Violence program expansion
		50	Quambie Park Residential Respite and Couples Rooms, Waroona
		52	Lakelands – Madora Pedestrian Bridge
		53	Keirnan Park Recreation Precinct, Mundijong
		54	Waroona Memorial Link
		55	Waroona Youth Precinct



PEEL ALLIANCE CONTACT

ANIKA SERER

Executive Director

0424 508 038
anika@peelalliance.org.au
www.peelalliance.org.au
PO Box 625
Pinjarra 6208

PROJECT AND INITIATIVE CONTACTS

PEEL ALLIANCE

Anika Serer
anika@peelalliance.org.au

- Peel Regional Trails Project - Project Coordination
- Peel Regional Transport Plan
- Peel Health and Wellbeing Taskforce

PEEL HARVEY CATCHMENT COUNCIL

Jane O'Malley
jane.omalley@peel-harvey.org.au

- Waterways Research Infrastructure
- Water Quality Infrastructure
- Lake Clifton /Yalgorup Masterplan and Rescuing of Lake Clifton Thrombolites
- Aboriginal (Noongar) Ranger Program
- State NRM Grants
- On-Ground Works Department of Biodiversity, Conservation and Attractions

SHIRE OF SERPENTINE JARRAHDALE

Paul Martin
pmartin@sjshire.wa.gov.au

- Wungong Trail Centre
- Mundijong to Jarrahdale Rail Trail & Jarrahdale Oval Trail Head
- Tonkin Highway Grade Separations
- Mundijong Freight Rail Realignment
- Keirnan Park Recreation Precinct

SHIRE OF MURRAY

Dean Unsworth
deanu@murray.wa.gov.au

- Dwellingup Gap Trails Development
- Agri-Innovation Precinct
- Peel Integrated Water Initiative

CITY OF MANDURAH

Mark Newman
ceo@mandurah.wa.gov.au

- Peel – Yalgorup Wetlands Trails
- Australian Waterways Centre of Excellence Data Array
- Australian Waterways Centre of Excellence Innovation Hub
- Lakelands – Madora Pedestrian Bridge

SHIRE OF BODDINGTON

Chris Littlemore
ceo@boddington.wa.gov.au

- Hotham Valley Rail Trail

SHIRE OF WAROONA

Dean Unsworth
ceo@waroona.wa.gov.au

- Sea to Scarp Trail
- Waroona Memorial Link
- Waroona Youth Precinct

QUAMBBIE PARK

Sharon James
sharon.james@quambiepark.org.au

- Quambie Park Couples Room
- Quambie Park Residential Respite

PEEL COMMUNITY DEVELOPMENT GROUP

Jill Robinson
pcdg.info@gmail.com

- Community Services Sector Regional Funding
- Peel Says No To Violence

ABOUT PEEL ALLIANCE

In 2010, elected and appointed leaders of key organisations and Local Governments from across the Peel came together in recognition that Mandurah and the wider Peel Region had been experiencing unprecedented growth, but this was not being matched by economic outcomes, nor was it being matched by State and Federal Government infrastructure and service provision funding.

From 2010 until 2018, this collaborative effort was known as Peel Regional Leaders Forum (PRLF). In 2018, a review of operations saw PRLF recognise its shortcomings and develop a bold new model based on the three important pillars of our region's future: economic development, community and social services, and the environment. To reflect its bold new approach to delivering solutions for the Region, PRLF also reviewed its name and branding, and is now proudly known as Peel Alliance.

Peel Alliance comprises the five Peel Region councils of Mandurah, Murray, Serpentine Jarrahdale, Waroona and Boddington, together with Regional Development Australia (RDA) Peel, the Peel-Harvey Catchment Council (PHCC) and the Peel Community Development Group (PCDG). The Peel Development Commission (PDC) fully supports Peel Alliance and its strategic priorities plan.

The Alliance is based on identifying the issues that are a threat to the Peel's regional status and identity, recognising that the organisation must show leadership on these issues and bring the community together to work collaboratively for the Peel's future. Under the new pillar-based model, organisations from each of the areas are brought together to discuss their plans, initiatives and projects, and develop them further. The opportunity to collaborate with like-minded organisations and have their proposals considered and prioritised is critical to developing the region into the future.

The main roles of Peel Alliance are to:

- Advocate for priority initiatives and projects;
- Advocate for the resolution of regional issues;
- Support other initiatives and projects that benefit the region.



The Peel Region faces numerous challenges, including rapid population growth, an ageing population, limited education outcomes, high unemployment, lack of industry diversity, and environmental decline.

Peel Alliance advocated projects seek to respond to the region's challenges, and ensure the Peel Region's sustainability for current and future generations.



ABOUT THE PEEL REGION

The Peel region lies immediately south of Perth and is bordered by the Darling Scarp in the East and the Indian Ocean in the West. The majority of the internationally significant Peel-Harvey Catchment is contained within its boundaries. These physical features and their unique ecosystems are protected passionately by communities and provide the foundation for the enviable lifestyle enjoyed by residents and visitors. It comprises five local government areas (Boddington, Mandurah, Murray, Serpentine Jarrahdale and Waroona).

Communities within the region have been connected from soon after European settlement, with forestry responsible for establishing and connecting these communities through road, rail and social networks. This connection has continued through to the present day with strong social, arts, cultural and sporting ties existing between the Peel's towns.

The Peel region is characterised by having its administrative centre of Mandurah connecting Government and other services to the rest of the region and Mandurah being the location for the majority of regional level events.

Although a small area of the Peel region is subject to peri-urbanisation due to long term high population growth, it has a low population density and a very low urban footprint of developed land. Large areas of land are subject to mining lease and operations, agricultural production and vacant Crown Land.

The population of Peel region is characterised by being older, less qualified and lower paid than that in Perth. The local economy has a much higher than average proportion of small non-employing businesses that have a turnover averaging almost 50% less than those in the metropolitan area.

The Peel's industries are dominated by mining, agriculture, and construction, with a growing health and community services sector catering to a growing and ageing population and a well-established and rapidly expanding equine industry. The Peel region currently has a very narrow and unsophisticated industry base.

The region's economic future will be based on the development of industry around innovative agriculture (Transform Peel) and tourism, particularly business, nature based and adventure tourism, and creating unique indigenous based tourism experienced. The region recognises the importance of developing an educated and highly skilled workforce with the capacity and capability to flexibly respond to meet requirements for future jobs.



ABOUT THE PEEL REGION

The Peel Region is growing rapidly with a growth rate of 2.2% during 2017/18. Mandurah is the Peel Region's largest local government area by population, and with a current population of 85,302, is also Western Australia's 11th largest local government area. Serpentine-Jarrahdale is currently Western Australia's fastest growing local government area in percentage terms, with population growth of 6.5% in 2016/17 and the third fastest growing Local Government area in Australia.

During the same period Western Australia's population grew 0.8% and Australia's population grew 1.6%.

ESTIMATED RESIDENT POPULATION (ERP)

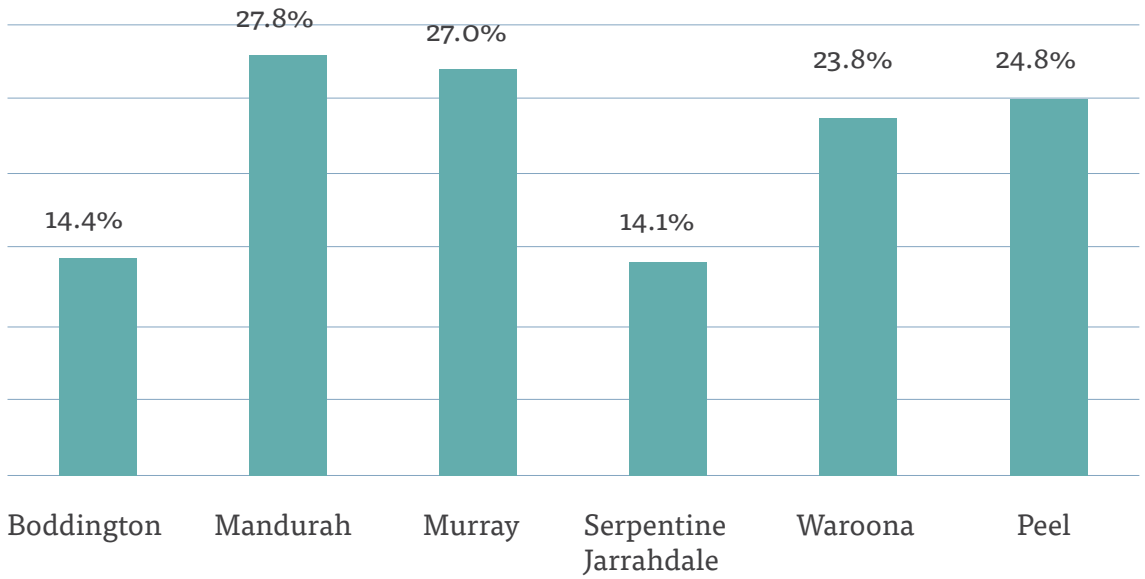
Australian Bureau of Statistics: 3218.0 Regional Population Growth, Australia

LGA Code	Local Government Area	Estimated Residential Population			ERP Change 2017 - 2018	
		2016	2017	2018		
50630	Boddington (S)	1,864	1,832	1,833	0%	1
55110	Mandurah (C)	83,099	84,040	85,302	1.5%	1262
56230	Murray (S)	17,083	17,307	17,653	2%	346
57700	Serpentine-Jarrahdale (S)	27,654	29,455	30,933	5%	1478
58820	Waroonna (S)	4,238	4,220	4,169	-1.2%	-51
	Peel	133,938	136,854	139,890	2.2%	3036

People aged over 65 represent 24.8% of the Peel population. WA has 19.3% of its population aged over 65 and Australia 21.3%.

PERCENTAGE OF POPULATION AGED 60+

Australian Bureau of Statistics: Data by Region 2011-2016



The Peel region has seen a period of sustained high population which is projected to continue, with an estimated population of 444,000 by 2050.

This continues the trend over the past 20 years where the Peel's population has grown by 106.3% from 1996 to 2016. This increase in growth has been well over twice that of Western Australian (45.2%) and over 3 times that of Australia (32.4%) (Source: ABS ABS 3218.0 Regional Population Growth).

Collectively, the Peel is a region of high unemployment (6.5% in December 2018) compared with the Western Australian and Australian averages (6.3% and 5% respectively). However, unemployment levels vary significantly between local government areas within the region.

UNEMPLOYMENT DECEMBER 2016 - DECEMBER 2018

Small Area Labour Markets

Local Government Area	Dec 2016	Dec 2017	Dec 2018
Boddington (S)	3.4	2.7	2.6
Mandurah (C)	11.3	7.0	7.4
Murray (S)	10.5	6.8	6.5
Serpentine-Jarrahdale (S)	5.3	4.6	4.5
Waroonna (S)	6.2	6.1	7.1
Peel	9.6	6.2	6.5
Western Australia	6.1	5.9	6.3
Australia	5.7	5.6	5

POPULATION RECEIVING SOCIAL ASSISTANCE

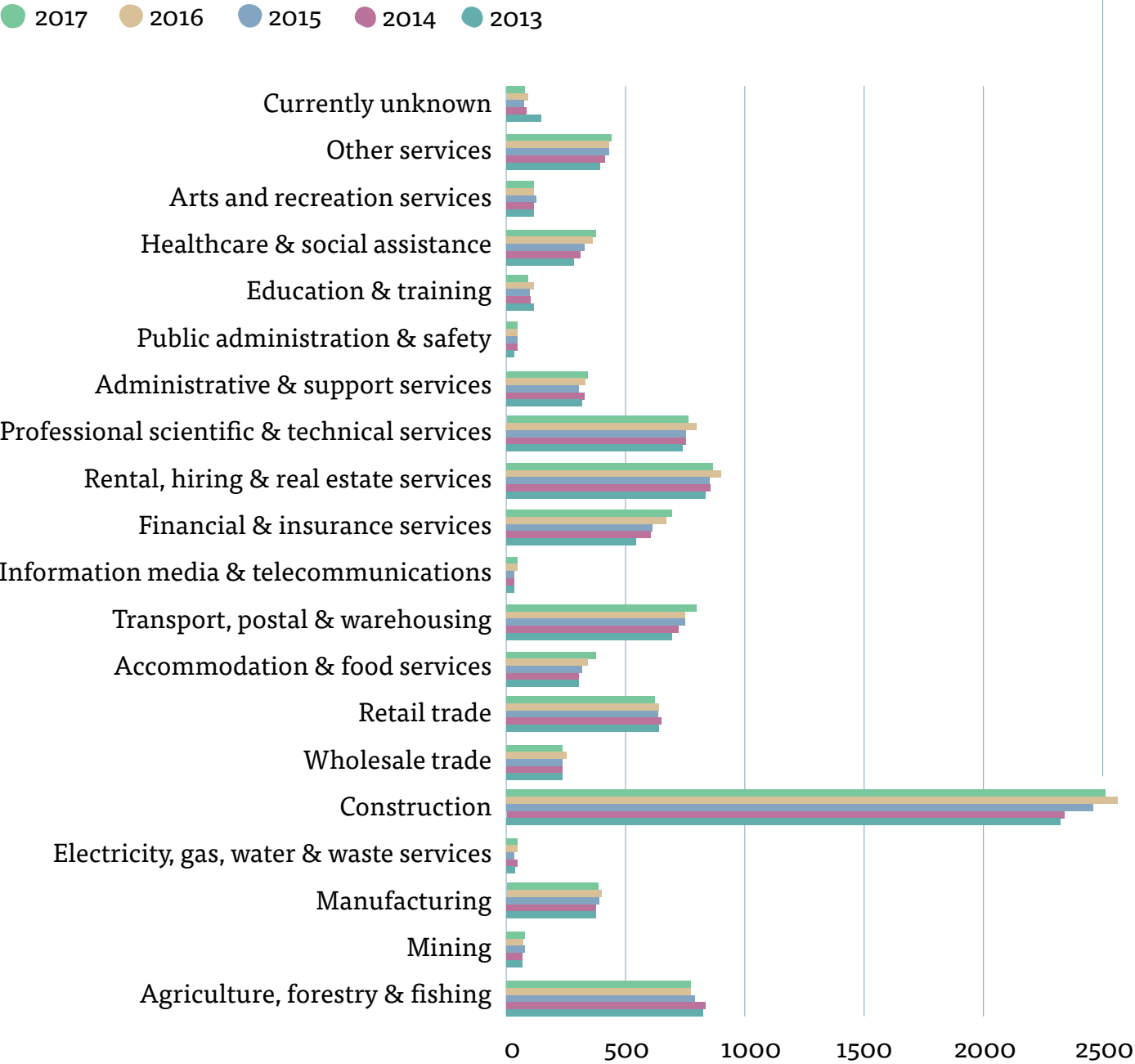
Source: Department of Social Services

Local Government Area	UE Rate		Newstart Recipients		Newstart Recipients Increase Mar 2017 - Mar 2018
	March 2017	March 2018	March 2017	March 2018	
Boddington (S)	5.1	2.3	48	55	7
Mandurah (C)	10.9	7.7	3,661	3,949	288
Murray (S)	10.1	7.3	742	802	60
Serpentine-Jarrahdale (S)	4.6	4.2	649	699	50
Waroona (S)	5.6	7.1	199	229	30

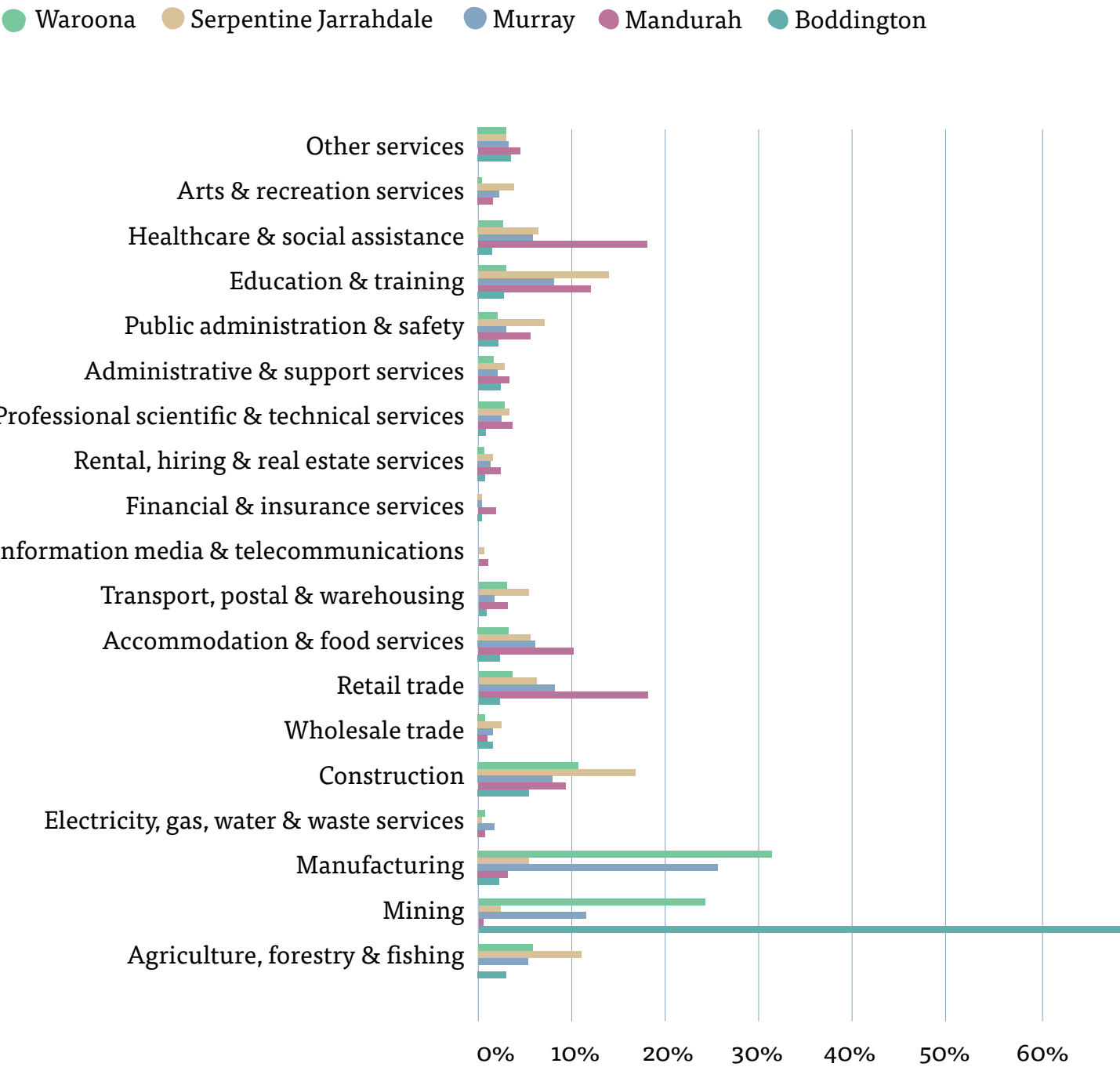
Mandurah, with its high reliance on the construction, retail and manufacturing industries as well as a large commuter and FIFO mining workforce, is the region's highest unemployment LGA, whilst Boddington, home of the Newmont Gold Mine and the South32 Bauxite Mine, currently has the region's lowest unemployment.



PEEL REGION - NUMBER OF BUSINESSES BY INDUSTRY



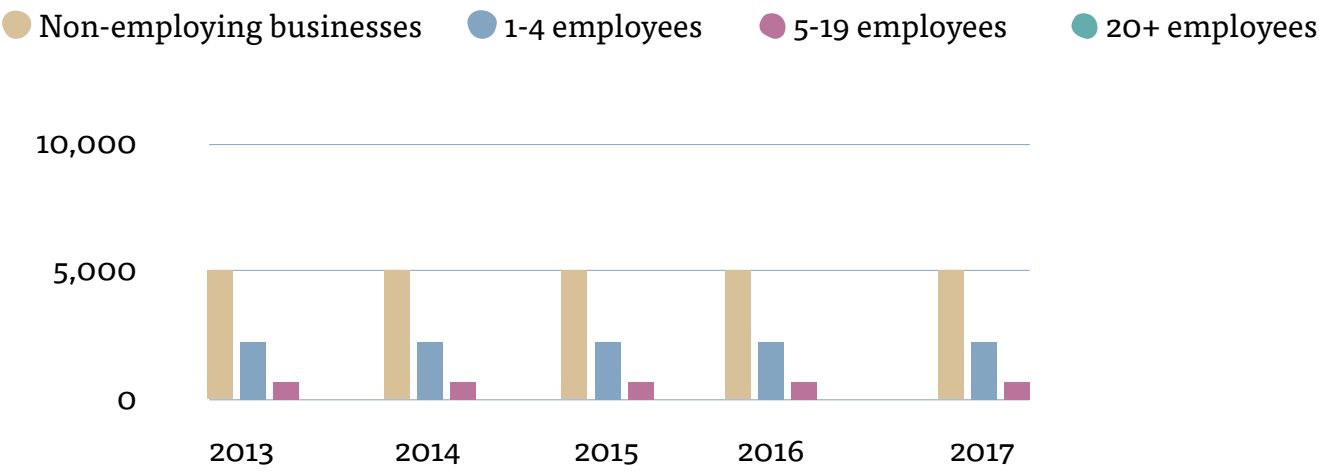
PEEL REGION - INDUSTRY OF OCCUPATION BY % OF LOCAL WORKFORCE



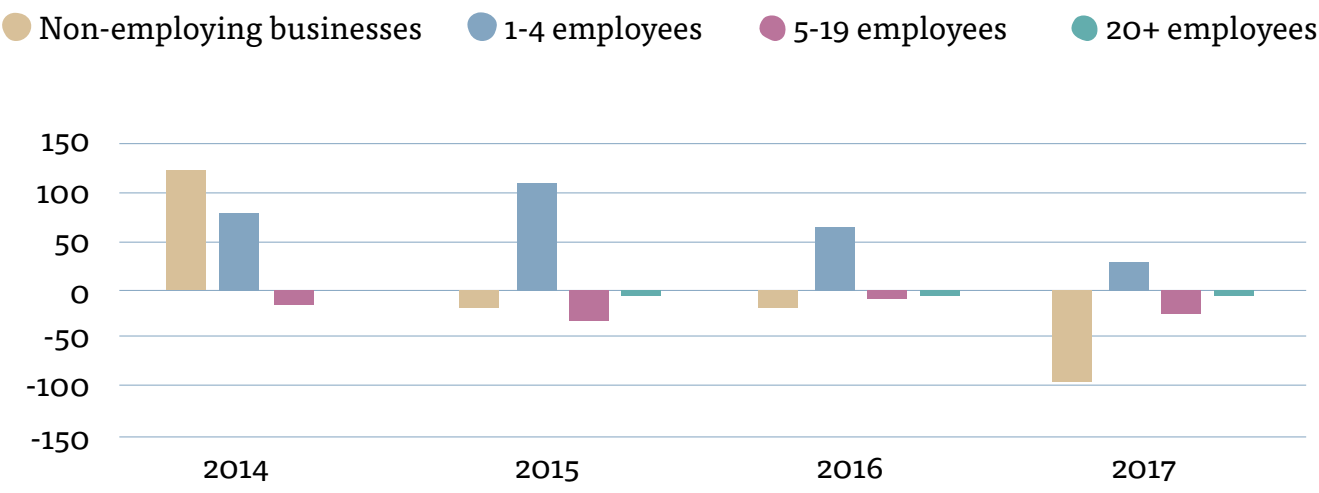
ABOUT THE PEEL REGION

The Peel region is characterised by a very high number of non-employing businesses, particularly within the construction sector.

PEEL REGION - NUMBER OF BUSINESSES BY NUMBER OF EMPLOYEES



PEEL REGION - NETT NUMBER OF BUSINESSES



TOURISM IS A MAJOR EMPLOYER IN PEEL

TTF Australia, 2018. Data is not available at the LGA level.

District	Tourism Employment	Tourism Businesses
Armadale (includes parts of Shire of Serpentine Jarrahdale)	1,000	400
Darling Range (includes parts of Shire of Serpentine Jarrahdale)	1,600	800
Dawesville	900	400
Mandurah	1,000	500
Murray-Wellington includes majority of Shires of Murray and Boddington)	900	400

The region aims to attract over 3 million day trip visitors per year by 2020.



Photo: Visit Mandurah and Russell Ord Photography

PEEL REGIONAL TRAILS PROJECT

\$24,055,000 over three years

The Peel Regional Trails project aims to position the Peel as a key regional trails hub linking trails to Collie in the south and Perth Hills to the north. Capitalising on its iconic landscapes and variety of trails from scarp to coast, Peel regional trails will attract tourism and adventure visitors for a number of days, either through a day visit, short break or extended holidays. Visitors will be able to enjoy the full range of quality trails including mountain biking, hiking, running, bush-walking canoeing and 4wding, as well as linking up the heritage Hotham Valley Railway, unique to Peel.

The Peel Regional Trails Strategy 2019 (Strategy) was developed to guide future strategic investment in trails recreation, tourism and event development across the Peel region. The Strategy is comprehensive and was developed over a 12 month period, encompassing an audit of the full breadth of current trails and their condition, and a public user survey to assess market motivators and needs.

The Strategy provided a number of recommendations for the upgrade of existing trails and the development of new priority trails to activate trails tourism throughout Peel, as well as an approach to the governance and implementation of the Strategy and trails construction on a regional collaborative basis. This Peel Regional Trails project outlines the design and construction of new priority trails and associated amenities identified in the Strategy.

The Peel Regional Trails project will bring a transformational economic and jobs boost to the Peel and flow on benefits to neighbouring areas of Collie and Perth Hills in general. The Project will also provide an opportunity for residents to connect with nature and undertake physical activity, both of which increase a community's resilience and wellbeing; and have positive impacts on physical health, mental health, personal wellbeing and social cohesion.

Specifics of the project include:

Project Management and Program Coordination \$150,000

In order to ensure the Project is adequately resourced and actioned, a Peel Regional Trails Coordinator will be employed to oversee the Project across the region under the direction of the Peel Trails Committee or similar. The cost of this resource would be in the region of \$200,000 per year predominantly funded by the Peel Alliance and Peel Local Governments, with \$50,000 per year for three years requested as part of this proposal.

The Peel Local Governments will also supply project managers and in-house resources to oversee compliance of the trails constructions in their respective local government areas.

Wungong Trail Centre – State budget request \$6,350,000

The Wungong Regional Park is situated on the western edge of the Darling Scarp. Renowned for its dramatic slopes, gorges and seasonal waterways, it provides spectacular views over Perth City and the Swan Coastal Plain. The area has significant demand for mountain bike, bushwalking, trail running and equestrian trails. Development of a Wungong Trail Hub is currently being designed and costed within a business case, through financial support from the Peel Development Commission (PDC) to quantify the economic impact and outline the scope of works for each site. This will include works such as track upgrades throughout the

Wungong network, tourism infrastructure (such as a potential bike lift and retail or hire opportunities), end of trip facilities such as bike parking, bike repair station, car-parking, and signage.

The Wungong Trail Hub is indicated to be of State significance and ranked high priority in the Peel Regional Trails Strategy, 2019 for its economic potential, tourism opportunity, value of the trail experience and demand. The trail centre will promote a high level of accessibility potentially with international level event facilities and a wide range of visitor services. Commercial private land surrounding Byford offers potential for the development of higher impact mountain bike trails on significant topography in open farming land and areas impacted by past or present quarry operations.

The population in Byford (less than two kilometres from the proposed Wungong Trails Centre) is predicted to grow from 15,375 in 2016 to 35,999 in 2036 (Australian Bureau of Statistics, 2016). With a population increase of 91% predicted there is a significant need to provide opportunities for prosperity, recreation and physical activity for community members. Such a significant population growth will result in an increased demand in both unstructured and organised recreational and tourism opportunities.

Dwellingup Gap - State budget request \$2,705,000

Building on the Dwellingup Trail and Visitor Centre project currently underway as well as the Dwellingup Adventure Trails project of mountain bike and drive trails just commencing, the 'Dwellingup Gap' is the construction of a further 18kms of mountain bike trails to enable Dwellingup to meet the State standards to become classified as a Trails Town by meeting the minimum length of purpose built mountain bike trails required (80km) with over 90 kms of mountain bike trails. This will enable Peel to have a Trails Town classification for the first time, raising Peel into the realm of official Trails Towns, which will attract more state and

national visitors to the region and allow Dwellingup to hold national level competitions, further attracting more visitors from outside the region.

In order to complete the Dwellingup National Trails Centre Project (\$4.5 million) and development of the Dwellingup Adventure Trails (\$8 million), the Shire of Murray estimates \$2.705 million over a two year period (2020/21 - 2021/22) will be required in order to finalise and optimally execute this transformational project.

Components of this project include:

Northern Loop Mountain Bike Trails

- 15km of new high quality, cross-country single track trail north-west of Dwellingup - connecting to the existing Turner Hill and Marrinup mountain bike trails
- 10km of re-aligned Munda Biddi Trail single track - currently aligned on existing fire roads
- Improve opportunity for local, regional and national events

Upgrade Existing Trails

- Upgrade Marrinup (8km) and Turner Hill (11km) trails to high quality, single track
- Improve opportunity for local, regional and national events

Tom's Trail Construction in Lane Poole Reserve

- 3km of new high quality, technical downhill trail - constructed to national competition standards

Trails and Visitor Centre Completion

- Cost pressures have reduced the Dwellingup Trails and Visitor Centre's scope of works. At present the existing information centre will not be completed to a standard capable of attracting a commercial tenant
- Works associated with this proposal will bring facilities up to the desired and designed standards

Project components continued

Basketball Courts, Pump Track and Skate Park Lighting

- The recent completion of the Dwellingup Skate Park and Pump Track precinct, in close proximity to the Trails and Visitor Centre, and its successful activation has highlighted a requirement for lighting upgrades
- Permanent lighting installation is required to support and accommodate for increased community and visitor usage, and competition.

Captain Fawcett 4WD Track

- The opportunity exists to create a return loop trail to Lane Poole, using the existing Murray Valley fire line within Lane Poole Reserve

Additional Canoe Launch and Retrieval Points on The Murray River

- Creating two additional canoe launching and retrieval points at Stringers and Yarragil, increasing canoe trail options from the current 8km to 12km

King Jarrah Walk Trail Upgrades

- Upgrade and inclusion of a new shorter loop option on the existing King Jarrah Walk Trail, providing long (half day) and short (1-2 hours) family walking options
- Upgrades will greatly enhance hiking opportunities within the Dwellingup area

Bibbulmun Track Walk Trail Loop

- Three day and two night trail loop, commencing and concluding in Dwellingup
- 11km required to connect the trail to the Bibbulmun Track

— The Dwellingup Gap Project is shovel ready and supports the \$12,395,000 that has already been invested.



PEEL REGIONAL TRAILS PROJECT

Peel – Yalgorup Wetlands Trails - State budget request \$7,500,000

The Peel Regional Trails Strategy 2019 identified a range of potential tourism and recreation trails including several urban and bushland trails in Mandurah. The Peel-Yalgorup Wetlands Trails seeks to overcome a range of challenges, including the need for:

- improved conservation and protection of the Peel-Yalgorup Wetlands System
- enhanced tourism product in Mandurah and the broader Peel Region and development in cultural tourism
- improved regional economic development and employment outcomes
- enhanced recreational opportunities in Mandurah.

Additionally, the Peel-Yalgorup Wetlands Trails is also a part of the City of Mandurah and Shire of Murray's joint economic development strategy, 'Mandurah and Murray: A Shared Economic Future', whereby the two Councils are currently undertaking a range of economic development programs and projects.

The Peel-Yalgorup Wetlands Trails is comprised of two inter-related elements – the Yalgorup National Park and the Peel-Harvey Estuary trails. In partnership with the Department of Biodiversity, Conservation and Attractions (DBCA) a Yalgorup National Park Recreational Master Plan is being undertaken with completion by December 2019.

The Recreational Master Plan will identify and map suitable nature-based tourism activities within and adjacent to Yalgorup National Park, which will subsequently enable DBCA to seek expressions of interest from commercial operators to establish appropriate recreation and nature-based tourism enterprises within the park. It will also provide a detailed analysis of the infrastructure investment required to enable new nature-based tourism development within Yalgorup National Park. The Recreational Master Plan will also

explore potential recreation and tourism options for areas adjoining Yalgorup National Park, potentially including Tims Thicket and White Hills in Mandurah, and Preston Beach in Waroona.

A pre-Feasibility Study of the Peel-Harvey Estuary Trails is underway to identify potential tourism and recreation trail opportunities for the Peel-Harvey Estuary that, if implemented, would enhance Mandurah's day-trip and short-stay tourism destination appeal and grow its economy, whilst helping to protect and preserve the estuary's natural environment. The Recreational Master Plan and Peel-Harvey Estuary Trails pre-Feasibility Study will outline full costings and shortlist the highest potential opportunities to pursue.

Hotham Valley Rail Trail - State budget request \$2,500,000

As recommended in the Peel Regional Trails Strategy 2019, the Hotham Valley Rail Trail will connect the Eastern most point of the Peel region and create a trails link and visitor flow between Dwellingup and Boddington via the rail reserve, as well as providing Boddington with a connection to the Bibbulmun Track. Additionally, this regionally significant trail will provide trail users coming to the Peel region from the Albany Highway with a more diverse trails option.

The trail will be 40 km of rail trail between Boddington and Dwellingup along the existing unallocated crown land which comprises the original rail track. The work will also reinstate Tullis Bridge, crossing the Hotham River approximately 8 km from Boddington and creating a link between the town and Rail Trail. Developing the Hotham Valley Rail Trail will aid in preserving the history of the Hotham Valley Rail Way in Boddington and offer trail users a unique experience of trails with a historic steam train attraction.

Developing the Hotham Valley Rail Trail will increase the tourism offering and provide economic benefit for the local accommodation providers,



Photo: Visit Mandurah and Russell Ord Photography

PEEL REGIONAL TRAILS PROJECT

café's, supermarket and other businesses in Peel's eastern most corner, and provide trail users greater options. Increasing visitation to Boddington will lead to a growth in economic diversification which is imperative to the Boddington part of Peel, as that local economy is largely dependent on the two mining operations.

Sea to Scarp Trail - State budget request \$1,200,000

The Peel Regional Trails Strategy 2019 identified sea to scarp trails in the Waroona area of Peel, including bushwalking, urban walking, trail running, mountain biking, cycling, equestrian, paddling, four-wheel driving and trail biking. Four priority trail opportunities include:

- a shared use trail linking Lake Navarino to Drakesbrook Weir (with linkages to the Bibbulmun Track and Mundi Biddi Track)
- a four-wheel drive trail linking Preston Beach with Binningup in the south and Mandurah in the north
- a shared use trail around the Lake Clifton Lime Kiln site in the Yalgorup National Park
- a cycle trail linking Waroona and Hamel.

Mundijong to Jarrahdale Rail Trail & Jarrahdale Oval Trail Head - \$3,650,000

The Shire of Serpentine Jarrahdale's Equine Strategy and Peel Regional Trails Strategy 2019 identifies the Mundijong to Jarrahdale Rail trail as a multi-use trail. The trail extends from the Mundijong Town Centre along the rail line through to a number of hub locations within Jarrahdale, being Jarrahdale town site, Nettleton Road (connecting to Langford Park – a high-use mountain bike park) and Jarrahdale Oval. An existing trailhead and pull-in bay for this trail is located near the intersection of Jarrahdale Road and Nettleton Road.

The multi-use rail trail provides both bushwalking and equine opportunities, and connects into mountain-biking trails. The trail will contribute to the aspiration to market Jarrahdale as a Trails Town, and further cement the Shire of Serpentine Jarrahdale as the equine hub of Western Australia.

The trail development will increase tourism to the area and benefit businesses in both Mundijong and Jarrahdale by driving local spending. Jarrahdale is an attractive location to those visiting from Perth due to its proximity and accessibility. The location is particularly desirable for those looking for a rural day trip experience, without the need for overnight accommodation, as well as to those wishing to stay longer. This trail supports the 'gateway to south-western WA trails' experience being only 55 minutes from Perth Metropolitan and providing opportunities for all ages, abilities and activities.

This component of the project includes environment investigations; and detailed design and construction to develop the track and provide supporting infrastructure such as wayfinding signage, trailhead signage, rest point infrastructure, and pedestrian counters.

Trailhead development at Jarrahdale Oval is also highlighted within the Peel Regional Trails Strategy 2019 for development as a location of state level significance, with high potential economic and community tourism/benefit. Ease of deliverability of this project is classed as very high.

The development looks to formalise the well-used site on Millars Road, Jarrahdale which is located adjacent to Jarrahdale Oval.

The Jarrahdale Oval Trail Head aims to develop the entire site into a multi-use events and trail head facility including capacity for multiple day events, camping and adequate parking for horse floats. The trailhead site is ideally located to connect into numerous trails to the north of the site in the Jarrahdale State Forest, as well as the oval itself. The Jarrahdale Oval Precinct will provide a functional trails and events space to facilitate a range of community activation initiatives.

The trailhead project specifically includes information and wayfinding signage, a rest area, road calming devices and crosswalks, and a hardstand area. Deliverables include the detailed design, construction and marketing of the project.

PEEL REGIONAL TRANSPORT PLAN

\$1,000,000

The Peel region has been included in the Perth and Peel @ 3.5 million - The Transport Network. The plan is effective for the linkages of Peel to greater Perth, however there is more detail required as to how the links address all transport modes i.e. roads, cycle ways, public rail network, freight line connections, opportunities for driverless vehicle corridors and prospective drone highways and waterway transport/infrastructure development.

It is proposed that a Peel Regional Transport Plan will provide a more detailed assessment with value added to the Peel region and its connectivity to its neighbouring Councils and the greater Perth. It will also investigate the 'Planning Investigation Areas' (PIA's) noted in Perth and Peel @ 3.5 million, which require articulation to understand their impact on future planning and transport needs.

The linkages proposed are to create economic value to the region, community, the residential, industrial and port facilities.

Peel Alliance seeks for this project to be listed as a priority for Department of Planning, Lands and Heritage, Department of Transport, and Main Roads WA, with collaboration from the five Peel Councils, to develop over the next two years.



TONKIN HIGHWAY GRADE SEPARATIONS

\$140,000,000

There are a limited number of grade separations that have been included in the State & Federal budget at this time for the extension of Tonkin Highway. It has been envisaged that the roundabout type intersections be used where grade separations are not utilised. Current locations of grade separations includes Bishop Road which is catering for the Perth to Bunbury rail line and other future rail realignment upgrades.

The current scope does not make provisions for grade separations at Thomas Road, Orton Road, Mundijong Road and South Western Highway. The \$140 million requested is to initially fund grade separations for Mundijong Road and Thomas Road intersections.



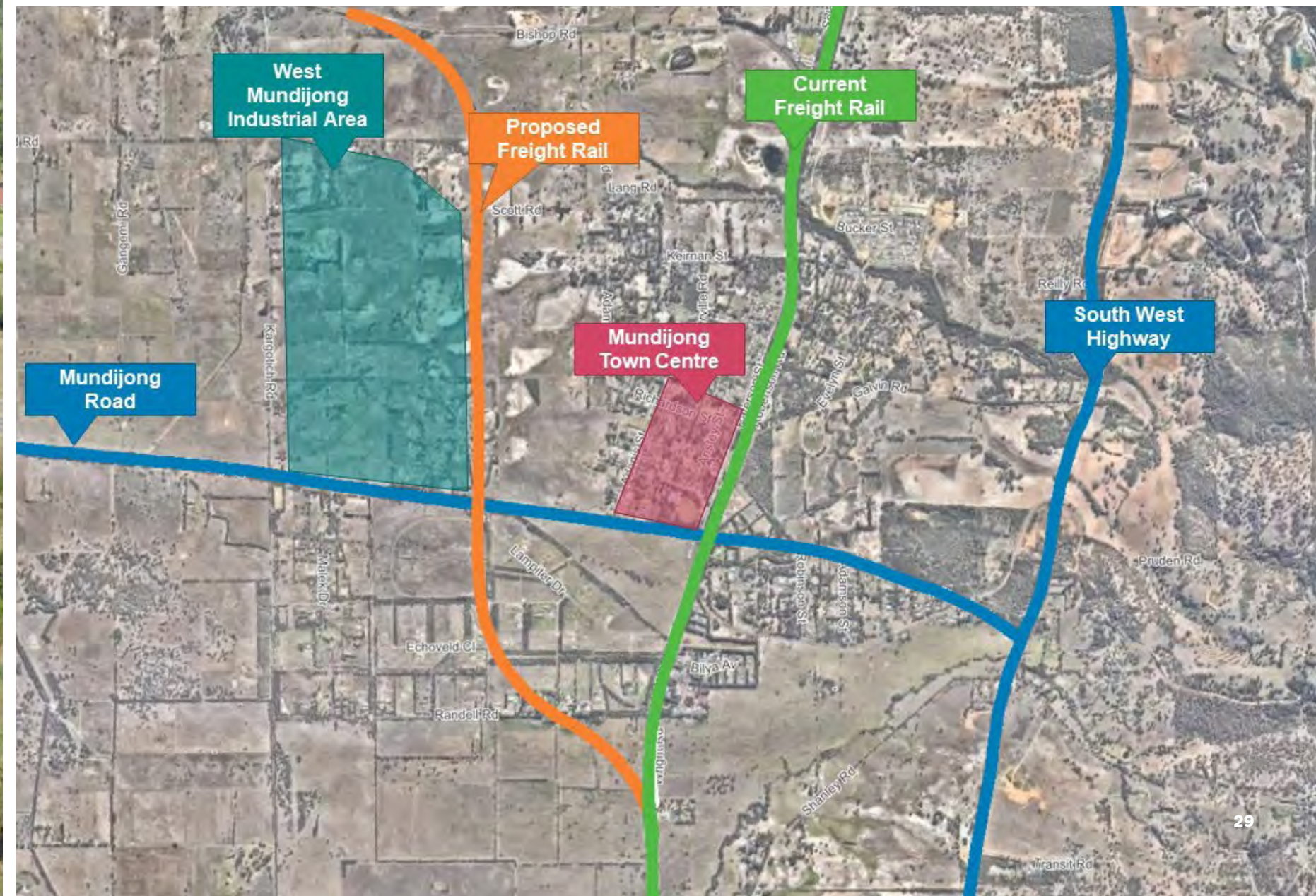
MUNDIJONG FREIGHT RAIL REALIGNMENT

\$60,000,000

\$60 million to realign the South West Freight Rail from the Mundijong Whitby Urban cell where it currently divides the town centre from the West Mundijong Industrial Area adjacent to the Tonkin Highway Reservation. This project will complement and provide increased effectiveness for the proposed Inter Modal Transport Hub, reduce future infrastructure construction costs, and provide value capture benefits through increased land values.

The railway currently facilitates up to 45 train movements per day, the vast majority of which are freight movements passing through the town centre.

In addition, Mundijong has a projected population of 50,000 which will see major development which is not conducive in the current location of the South Western Freight Rail Location.



AGRI-INNOVATION PRECINCT

\$3,000,000 over five years

The Agri-Innovation Precinct (AIP) is a catalyst for the conditioning of the next generation into a highly skilled workforce to satisfy job requirements.

The common-use facilities within the Precinct will be a Shire of Murray owned asset that will help secure long-term sustainability for the district, and through strategic linkages and improved access to export markets, local business will have new platforms on which to expand and grow.

Business Assessment and Planning;
Business Support Services
\$500,000 over 5 years

Innovation, Equipment, Research and Development
\$2,500,000 over 5 years

These common-use facilities will accommodate high technology food production, value-added processing and university-led research and development, including:

Science laboratories

- Food product, research and small batch production facilities
- Offices and co-working spaces
- Cold and dry storage
- Warehousing, packaging and distribution and incubator space
- Café and public presentation areas

The AIP will also accommodate a substantial business support network comprised of mentors and business specialists.

The facility provides a unique opportunity for existing enterprise, entrepreneurs and start-ups to access new technologies, test and build new products, access new domestic and export markets and develop sustainable new enterprise.

A \$21.75 million grant through the Federal Government’s Regional Growth Fund will see to the construction of the AIP. An Interim Steering Committee comprising the Shire of Murray, the Peel Development Commission, the

Department of Primary Industries and Regional Development (DPIRD), Murdoch University and Fund Singapore, has progressed the project since its commencement in April 2019.

Enterprise Support Program

The Enterprise Support Program (ESP) is a critical component of the AIP’s success and is key in driving innovation, creating new enterprise as well as new products for export markets.

- The ESP comprises eight elements:
- Business Assessment and Planning
 - Business Support Services
 - Export Advice
 - Innovation, Equipment, Research and Development
 - Ideas and Events
 - Grower/Supplier Network
 - Additional Services at Satellite Facilities
 - Venture Capital Fund

This is the heart of the ESP and is concerned with the provision of grant funding to existing business, entrepreneurs and start- ups entering the AIP. The Innovation Fund will operate through existing business, entrepreneurs and start-ups applying to the fund for support (vouchers) in three key areas:

- Innovation vouchers to access science based and product development support
- User incentive vouchers to access space and facilities
- Vouchers for specialised equipment



AGRI-INNOVATION PRECINCT

State Government Support

The Shire of Murray is seeking the Western Australian Government's support for the ESP in the following areas:

Business Assessment, Planning and Support

The State Government, through the Small Business Development Corporation, already provides small business advisory services to the South West and Peel regions. IPS has been contracted to deliver these support services, currently located in Bunbury and Mandurah.

The Shire of Murray requests the State Government to consider expansion of the current small business support initiative into the Agri-Innovation Precinct, once operational in 2022.

The Shire of Murray will develop a mentor group from within the Mandurah/Murray community, to work with and assist early stage enterprise.

Export Advice

The Peel region currently lacks any type of export assistance or advice service.

The Shire of Murray seeks the support of the State Government to establish an advisory function within the AIP, once operational in 2022. This service could be facilitated through a small office within the AIP, overseen by a full-time officer reporting to the WA Open for Business agency. The Shire will also have discussions with Austrade for this purpose.

Innovation, Equipment, Research and Development

The Shire of Murray will establish an Innovation Fund for the AIP, initially contributing \$1 million as well as a percentage of its rental receipts annually. At full occupancy this is expected to amount to \$75,000 per annum.

The Shire of Murray requests the State Government to consider a funding contribution towards the Innovation Fund of \$2.5 million, with cash flow considerations to be negotiated.

The Innovation Fund will have clear rules and independent oversight, and will disburse funds via the voucher system to businesses, entrepreneurs and start-ups applying for support. It is expected that the bulk of vouchers would have a maximum value of 50% of the research/product development costs – the balance being the responsibility of the foundation investors (or other).

Under this arrangement there will be \$1 million per annum available to support at least 25 enterprises.

PEEL INTEGRATED WATER INITIATIVE

\$1,100,000 - \$4,000,000

Over the course of the last three years, the Department of Water has undertaken an extensive investigation into water quality and availability within the Transform Peel program area.

A maintain momentum scenario would cost \$1.1 million, whilst a full stage two initiative would require a \$4 million investment.

With funding under Transform Peel coming to an end, there is a need to maintain momentum in the project due to:

1. Water demand modelling for the Mandurah, Murray, Waroona complex indicates that conventional groundwater sources will face severe pressure within the next 10 years – and probably sooner
2. There is an urgent need for industry and government to innovate both on the supply

and demand sides of the water equation – finding new sources of water and getting more efficient in water use, particularly in agriculture Department of Water is working with the Department of Primary Industries and Regional Development to secure funding in order to continue the critical work required to secure new water sources.



AUSTRALIAN WATERWAYS CENTRE OF EXCELLENCE

Mandurah’s competitive economic advantage, is its waterways. A simple demonstration of this is the fact that over 140 PhD students from across the country already come to the region to study its waterways in various contexts.

For the Peel region, and indeed the state, to capitalise on this unique asset and realise the full economic benefits, Mandurah is aspiring to become the Australian Waterways Centre of Excellence. This would cluster and formalise existing industry and activity in the region and stimulate new economic opportunities, leading to the diversification of what is currently a very narrow economy.

This aspiration will be achieved in two phases, delivering on three components:

Phase 1

Component 1 – Data Array

Installing the infrastructure that will enable the City of Mandurah to develop a proprietary suite of world class waterways data, which will attract science-based industry, research, agribusiness and tech companies to Mandurah.

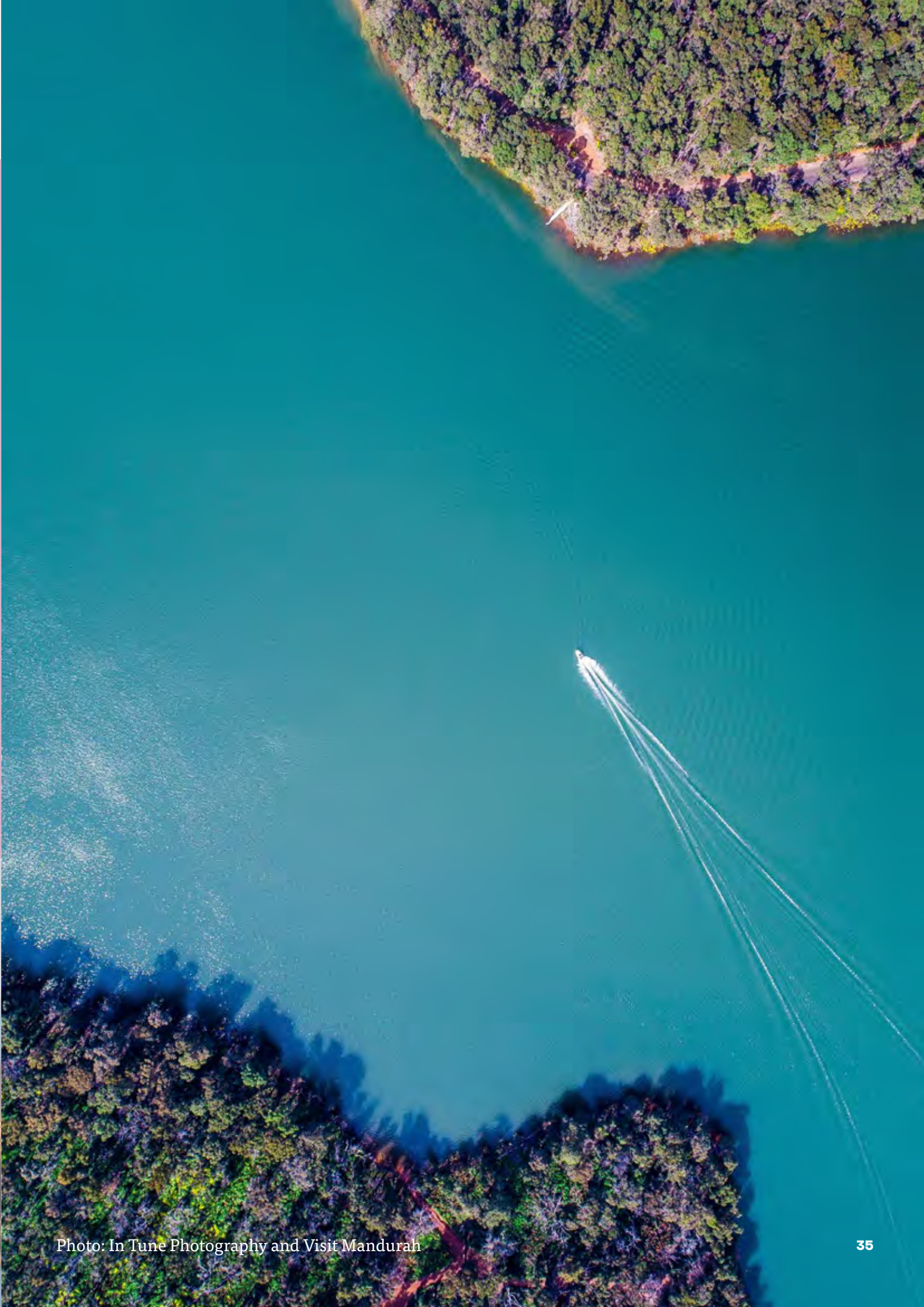
Component 2 - Waterways Research Infrastructure

Delivering purpose built remote and satellite infrastructure and technology across the Peel region, to support and inspire co-ordinated and collaborative water science. This Peel Harvey Catchment Council initiative will attract further local, national and international researchers to the Peel Region creating a science groundswell and multiplier impacts for economy and growth.

Phase 2

Innovation Hub

Creating an iconic waterways centre of excellence in Mandurah’s city centre, which will be a permanent centralised hub for collaborative research, business activities and eco-tourism. Some of this activity is already occurring in the region and this hub will formalise those relationships and realise any potential efficiency and innovation opportunities. It will also attract new and diverse related industry to the region, creating local jobs and economic activity.



AUSTRALIAN WATERWAYS CENTRE OF EXCELLENCE

Phase 1, Component 1 - Data Array (\$1,500,000 project, seeking \$1,000,000 Government funding)

Large reliable data streams are rapidly becoming valuable economic products. Industry of all types are increasingly reliant on access to various sources and streams of data to plan, grow, improve and innovate. These data streams are often merged with other big databases to form complex analysis and prediction tools.

The Waterways Data Array is a transformative project for City of Mandurah and Shire of Murray that will create a common tool that activates industry clusters around agriculture, ecotourism, aquaculture, agri-tech and research and development and a range of industries that form around the Peel Harvey Estuary and its waterways.

It will comprise a network of sensors that will collect data from across the Peel-Harvey waterways and agricultural hinterlands in a large volume over time. This will provide a collection of important data streams that are real-time and location-specific.

It will become a unique open platform that provides user friendly data on water and soil conditions, providing vital information such as temperature, salinity, turbidity, phosphorous levels, tidal movements and dissolved oxygen levels to the science and agricultural sectors. This in turn will provide farmers and land managers with vital data that enables them to reduce their nutrient discharges and carbon emissions, regenerate their lands and increase their agricultural productivity.

The data array will attract specific agri-business, science based activity and technology companies

to the region where they have the opportunity to gain real time access to data for their projects and ventures, encouraging collaboration, innovation and growth. It has the ability to catalyse the generation of over 1,000 high quality jobs in the region.

Phase 1, Component 2 – Waterways Research Infrastructure (seeking \$1,850,000 Government funding)

The Peel Harvey Catchment Council's Waterways Research Infrastructure initiative will make remote and satellite infrastructure and technology across the Peel Region available to researchers, science and community to support and inspire co-ordinated and collaborative water science and related industry.

This infrastructure and technology, coupled with the availability of the unique data array, will attract further local, national and international researchers and industry to the Peel Region creating a science groundswell and multiplier impacts for economy and growth.

Purpose built infrastructure and equipment will function as an annex to the researchers' main facility and be equipped to assist them with intensive field work, preparation for meetings or community engagement events and short-stay accommodation.

All infrastructure and equipment, as displayed on the opposite page, would be clearly branded and managed by the Peel-Harvey Catchment Council on behalf of researchers, community and visitors to ensure equity and maintenance and care.



A central hub and shared spaces and facilities with access to technology



A purpose built and transportable remote laboratory adjacent to the Serpentine River



A purpose built transportable remote laboratory and visitor viewing at three identified locations



A small research boat, layup area & 4-6 moorings throughout the Peel



An events trailer for use at excursions, school incursions, community events etc.



Signage / plaques and communications and promotional materials



Purpose built mobile laboratory vehicles that will be made available for research and science teaching



2x River Health Assessment Trailers (fully equipped)



1 x Vehicle for research access (all terrain twin cab)



10 scholarships of \$10,000 each to help direct critical research needs



Water quality equipment to assess the condition of the Ramsar Site and the effectiveness of interventions to improve water quality.



Monitoring equipment to support citizen science initiatives



AUSTRALIAN WATERWAYS CENTRE OF EXCELLENCE

Phase 2 - Australian Waterways Centre of Excellence Innovation Hub (upwards of \$40 million project)

Creating an iconic waterways centre of excellence in Mandurah's city centre, which will be a permanent centralised hub for collaborative research, business activities and eco-tourism. It will provide a centralised base for the increased industry and research activity coming into the region as a result of the unique opportunities presented by the Data Array and Waterways Research Infrastructure. Some of this activity is already occurring in the region and this hub will formalise those relationships and realise any potential efficiency and innovation opportunities.

The Innovation Hub will be an iconic, architecturally designed building located in central Mandurah, providing a global water science capability, whilst enhancing Mandurah's status as one of Perth's leading daytrip destinations. It will include laboratories and conference facilities, an interactive public foyer space, data displays, cultural gallery and office spaces.

Planning for the \$40+ million project is anticipated to commence in 2019/20 and take around two to three years to implement, with construction due to commence within the next five years.



\$3,400,000

The objective of the project is to deliver stormwater retrofits sites within the Peel Region boundaries of the Peel-Harvey Catchment (City of Mandurah, Shire of Boddington, Shire of Murray, Shire of Serpentine Jarrahdale, and Shire of Waroona) over four years, to reduce the nutrient load entering the Ramsar listed Peel-Harvey Estuary.

Fixed infrastructure assets, including, stormwater retrofits, bio-filters or constructed wetlands along with lake and wetland recovery projects are required at priority sites in the Coastal Catchment of the Peel-Harvey. An investment of \$3.4 million over 4 years will complement the State's proposed Regional Estuaries Initiative Stage II. Local Governments are committed to implementing water quality projects but need technical and financial support to bring forward capital work plans that would otherwise take >20 years to implement. A three (3) tier government

approach to Water Quality in the Peel-Harvey, delivered collaboratively under the coordination of the PHCC will enable infrastructure needs with an aim to prevent a further collapse of the system.

The City of Mandurah and the Shire of Murray in particular have committed to this project and will provide in-kind and financial contributions to approximately double the investment. The PHCC will run an expression of interest process to determine which prospective projects will bring the best outcomes and the Local Governments will be responsible for all approvals and construction, as was successfully managed through the 2011-2013 project.

The project will be delivered to provide value for money, with all conditions already set for the successful implementation and construction of stormwater retrofits across the project timeframe.

The stormwater programs run by PHCC have proven to be of great benefit in the Peel-Harvey Catchment. A variety of reasons have motivated the local governments to improve and strengthen their stormwater management infrastructure. This project will:

1.

Improve the Health of the Peel-Harvey Estuary, and the Rivers that flow into it, with the additional benefit of overall job creation for the real estate, tourism and fisheries industries, through the improvement of our waterways
2.

Increase the opportunities to councils to improve their stormwater management infrastructure
3.

Provide an opportunity for integrated catchment management, through a coordinated monitoring program and continued support from the Peel-Harvey Catchment Council.
4.

Increase the chances to attract additional state and federal funds to improve the Catchments water quality.
5.

Support Local Government Stormwater Strategies by providing clear opportunities for improvement and implementation of constructed assets.

\$4,000,000

The thrombolites at Lake Clifton attract over 240,000 international and other visitors every year. The facilities at this tourist attraction need to be upgraded to enable visitors to have a quality experience, and provide jobs and economic

growth for the local community. Improved facilities for Aboriginal tourism and research (Stage 1 of Peel Waterways Institute) will increase visitation numbers and bring employment and economic benefits to the Region.

The Peel-Harvey Catchment Council, City of Mandurah and the Department of Biodiversity, Conservation and Attractions (DBCA) are committed to working with the State Government for the development and implementation of a master plan.

The thrombolites are a threatened ecological community and are in danger of becoming extinct unless action is taken. \$500,000 is required for a pilot scale trial to commence a rescue mission for the thrombolites from the increasing salinity of Lake Clifton.

The thrombolites are one of only two communities in south Western Australia. They are listed under the Environmental Protection, Biodiversity Conservation Act as critically endangered. Lake Clifton also supports a unique ecological community, including unusual species of macroinvertebrates and migratory and resident bird species including the vulnerable hooded plover.

The greatest threat to the thrombolites is the increasing salinity of the lake which has increased more than three-fold between 1985 and 2010, probably caused by human induced changes to the hydrology of the superficial aquifer. The ecological character of Lake Clifton will be improved by increasing the understanding of the Lake's hydrological regimes and evaluating the condition and viability of the Thrombolite Threatened Ecological Community funds for which have been secured from the Commonwealth Government's Regional Land Partnerships Program, being delivered by the Peel-Harvey Catchment Council. Setting up a pilot scale trial to investigate the effects of increasing flows of fresh groundwater to the condition of the Thrombolites is the next vital step. Without implementation of this activity, there is a high risk that Lake Clifton, including the Thrombolite Threatened Ecological Community, will no longer be ecologically viable.



ABORIGINAL (NOONGAR) RANGER PROGRAM

\$4,600,000

A local Noongar Rangers Program in the Peel Region will provide significant benefits for the Noongar and broader community. Sharing cultural knowledge, ongoing employment and career opportunities in natural resource management (working on country) and tourism, building pride and mentoring and increasing capacity through skills based training, are the tip of the benefits.

There is an identified growing demand for skilled workforces and an increase in employment opportunities for Indigenous (Noongar) communities within the Peel Region. A major focus of a Rangers program will respond to Noongar requests to build capacity, technical skills and employment opportunities while increasing long term business/enterprise and career options for Noongar people in land and waterways management.

The program will include traditional knowledge sharing and building competency for young people to become role models and mentors within their communities. Strong linkages to the Peel Waterways Institute (Stage 1) and opportunities through WAITOC (Western Australian Indigenous Tourism Operators Council) and the DPC (Capability Building Training programs) will help increase capacity and long term career and business options and boost the local economy. There is an established commitment by the Peel-Harvey Catchment Council, Local and State Governments to support local Noongar Rangers, over time, to establish sustainable Noongar businesses to provide for the local Noongar people and their communities in perpetuity.



\$23,400,000 per annum

An increase of the State NRM Grants will come closer to enabling the unmet community demand to assist in Landcare/Natural Resource Management across the state. In 2018 individuals and community planned, budget and submitted to government to deliver 253 projects valued at \$99.3 million. With only \$7.8 million available the state lost out enormously, particularly when you consider the estimated value of \$60 million in volunteer hours and contribution from WA communities.

Metro and regional communities of Western Australia have sent a clear message to the WA, the environment matters, and we can be part of the solution, but more funding is needed.

Western Australia shows clear indications of being negatively affected by a rapidly changing climate. As a society we profoundly value our landscapes and communities. By providing additional funding for practical initiatives to combat and adapt to that change, community also brings economic value, healthy communities and a healthy and productive landscape.

\$24,000,000

The PHCC are advocating for an additional budget for the Department of Biodiversity, Conservation and Attractions, for capital works and on-ground maintenance of DBCA assets, particularly Yalgorup National Park, and biosecurity actions in the Northern Jarrah Forest throughout Dwellingup and Serpentine National Park.



PEEL HEALTH AND WELLBEING TASKFORCE

\$325,000 over two years

A Peel Health and Wellbeing Taskforce is being initiated with an overarching objective to develop a long-term integrated health and wellbeing model for the Peel.

Deliverables in achievement of this objective will include:

1. Exploration and enablement of coordinated care models for high priority areas e.g. mental health, ageing
2. Engaging in trials of initiatives from the Sustainable Health Review
3. Exploration of options for appropriate access for emergency care
4. Collaborate in the development of applications and submissions for Peel health and wellbeing related initiatives
5. Targeted preventative education programs including promoting a healthy environment

Actions will be achieved through immediate and longer-term actions, small system improvements and planning for and advice into, the future acute needs of the region.

Membership of the Taskforce reflects a fresh approach to supporting health and wellbeing, for the first time it will bring together all levels of government, key service providers and decision makers in the Peel health sector to:

- Focus on the whole of society and all factors that contribute to a healthier life,
- prevention and early intervention for treatment of disease and illness to reduce reliance on hospital and emergency services,
- coordination and collaboration with an aligned approach across all agencies, service providers and government

The formation of the taskforce is in early stages and includes all local governments (City of Mandurah, Shire of Murray, Shire of Waroona, Shire of Serpentine-Jarrahdale, Shire of Boddington), Office of the Minister for Health, Peel Community Development Group, GP Down South, Peel Health Campus, South Metropolitan Health Service, WA Primary Health Alliance.

Funding is requested to resource the taskforce for a period of two years to enable executive support, facilitation of meetings, project support, consultation and implementation of initiatives.



COMMUNITY SERVICES SECTOR REGIONAL FUNDING

As outlined in Objective 1 of the Peel Alliance Business Plan, “Reinforce, promote and enhance the identity, regional boundary of Peel, ensuring its retention as a region”, the inconsistent use of boundaries for the

Peel Region by state and commonwealth government agencies has led to funding rationale that does not support the provision of services to all residents of the Peel region.

Sometimes included in the boundaries of South Metro, other times listed as a region, is a problem that needs to be addressed and applied consistently across all government agencies. At 5,600km2, the size of the region requires a 15% ‘weighting’ to be applied to the funding structure for Peel in recognition of the distances that need to be covered and the extra costs incurred. Perth Metropolitan agencies are not responsible for supporting the needs of residents across such a large and growing area and yet are currently funded at the same rate as services in Peel.

Population growth across the region continues to outstrip forecasts and the need for community services in Peel will continue to grow. In addition, Peel has a diverse demographic range with some parts of the region having a large elderly population and other areas having a high population of children and youth. Identified as a high risk region for domestic violence, youth suicide, drug use and homelessness, in recent years, community service providers have been required by state government to cut service delivery to meet the amount of funding available despite being unable to meet the needs of the residents of the region. We request that Peel be consistently recognised as a region:

By State and Australian Governments, their agencies and contracted services delivery agencies;

- All government agencies use the Peel regional boundaries to define their activities.; and
- Service delivery agencies with responsibility for delivering in the Peel are to be based in Peel and deliver services to the whole region.
- Funding to community services in Peel is calculated at a rate that reflects the size of the region and enables services to be delivered to all residents of Peel.

PEEL SAYS NO TO VIOLENCE (PSNTV)

\$300,000 over three years

In 2016, the Peel region had 12.7% of WA's family and domestic violence (FDV) incidents even though the region has only 5% of the state's population. In 2016/17, there were 2,667 FDV incidents where Police attended but there is evidence that only 1 in 7 incidents are reported.

PSNTV Alliance is seeking support in expanding reach over the next three years, resulting in:

- Greater community understanding of family domestic violence (FDV)
- Improved service coordination and victim support
- Enhanced awareness of FDV services
- Increased community action to stop FDV in the Peel region

The Peel Says No To Violence project (PSNTV) was established to raise awareness of and create broad community involvement in addressing the scale, reach and effects of FDV in the Peel region. Initially, the project was federally funded under the Building Safer Communities for Women and Children program.

Key FDV service providers and agencies have formed the PSNTV Alliance which works to strategically link individuals, businesses, organisations, parliamentarians and sporting groups with the collective aim of taking a public and pro-active stance against FDV in our region.



QUAMBIE PARK RESIDENTIAL RESPITE

\$3,000,000

\$3 million to develop the Quambie Park Residential Respite proposed option for people living with dementia. This project will provide a safe, dignified and welcoming home away from home accommodation option - either short or long term.

The project, comprising a facility catering for up to 15 individuals, will provide a break for people

living with dementia who require some specialised and unique support and time to themselves in an environment where they are understood and accepted. The facility will also accommodate carers and/or family members who require some respite and time to themselves away from the caring role.

QUAMBIE PARK COUPLES ROOM

\$200,000

\$200,000 to develop a couples room to prevent the separation of aged people due to illness or dependence on receiving assistance. The project is anticipated to benefit 20 to 40 people over a five-year period.



LAKELANDS – MADORA PEDESTRIAN BRIDGE

\$4,000,000

\$4 million to upgrade and relocate an already-purchased pedestrian bridge to connect the communities of Lakelands and Madora Bay and provide disability access.

The recent rapid development of Lakelands and surrounding suburbs has led to a community

with restricted access to facilities, community services, schools, public open spaces and neighbouring communities by widened roadways on its boundaries. Installation of the bridge would alleviate these issues, providing safe connections for school students and residents in Mandurah's northern suburbs.

Development activity in and around the Lakelands Town Centre has progressed adjacent to Mandurah Road, with the development of a district level shopping centre, community centre, district level playing fields, public senior high school (under development), and a site provided for a future K-12 Catholic School.

Access for pedestrians and cyclists either side of Mandurah Road is restricted by Mandurah Road, and the proposed project will provide alternative access.



KEIRNAN PARK RECREATION PRECINCT

\$20,000,000

Keirnan Park Recreation Precinct is a community driven project located on Keirnan Street in Mundijong. Keirnan Park Recreation Precinct project was gifted the Management Order from the State of WA, for a 60ha sporting precinct in May 2018.

The total Keirnan Park project is anticipated to cost approximately \$100 million.

Stage 1 includes the relocation of an existing BMX facility, and new AFL/Cricket ovals, 12x netball courts and 2x pavilions. This stage is to be completed by 2022.

There is a strong community drive for the new facilities to be provided at Keirnan Park. The Mundijong population is forecast to increase by over 600%, to 20,961 residents by 2036. Combined with increasing sporting participation trends, the demand for additional high quality sporting facilities will be realized in the coming years.

With a number of regional-level sporting codes to be constructed, a recreation complex of this size will attract people into the area from beyond the Shire of Serpentine Jarrahdale. Outside club use times, this facility will be open to the public for recreational purposes and activated through unstructured, passive public spaces including nature based walking tracks, play spaces and barbeques.



WAROONA MEMORIAL LINK

\$700,000

\$700,000 to create a public open space accessible to the community and visitors in the town centre that links Waroona Memorial Hall with Waroona War Memorial embracing an ANZAC and wartime theme. This public open space will enhance the current area, and link the several locations that are currently utilised for commemorative events such as ANZAC Day and Remembrance Day. It will also be a feature attraction in the town centre, and a place for the community and visitors alike to use close to businesses, services and amenities.

The current War Memorial site is the only one of its kind in Waroona, and a well- designed public open space with appropriate landscaping and lighting that links to the previous work completed at Drakesbrook Place. The site could be a feature attraction for the town centre as well as a focal point for commemorative services. The Waroona Hamel RSL Branch is celebrating its 100th year in 2019, and are hopeful that this project could help mark that significant milestone.



WAROONA YOUTH PRECINCT

\$1,000,000

\$1 million to create a youth and family friendly public open space accessible to residents and visitors, adjacent to and linking to Waroona Recreation and Aquatic Centre. This precinct will redevelop the existing skate park and include additions such as play and discovery equipment,

toilet facilities, shade and seating, and infrastructure for people of all ages to connect and engage.

This project will create a youth precinct, family hub and recreational hotspot in the community.





Printed on recycled paper



**PEEL
ALLIANCE**

